



CORPORATE PROFILE

Introduction

V.Pack & Move (Bangkok) Co., Ltd. was founded in 1989 in a small rented warehouse. Today, we have become one of Thailand's leading packing and moving companies with our own 3,000 square meter warehouse, offices and even staff accommodation. We also have an office in Laemchabang to handle all customs formalities at the ports on the Eastern Seaboard.

On the following pages, we highlight some of the many sectors in which we work.

We have worldwide associates and are members of TIFFA, Thai Chamber of Commerce, International Association of Mover, Euromovers, Asian Relocation Association, Inpro and Australia Thailand Chamber of Commerce.

Quality control and certification are important aspects of all our operations. We have ISO9001 and ISO14001 and all our timber is certified with IPPC stamps.

Our packing is done to recognized world standards as we follow both the German HPE and Japanese JIS procedures to ensure the safety of all of our packing. We provide plastic and bubble wrapping, VCI, vacuum sealing and shrink wrap as per the requirements of each item to be packed. For long term outdoor storage, cases are covered with canvas which is strong, water-proof and not subject to degradation through exposure to UV.

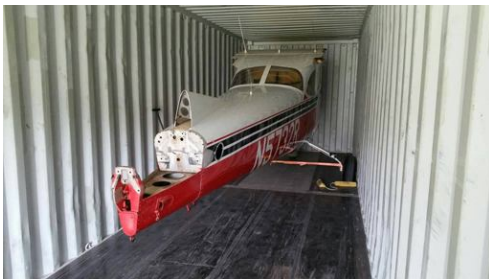


Aerospace

We are the most experienced service provider for the installation or removal and packing of commercial flight simulators in Thailand. We work with the world's major manufacturers of commercial flight simulators and their clients in Thailand. Flight simulators that we have assisted on the installations include ATRs, B737, B747, B777 and A320s, A330s and A380.

We have also arranged and assisted with the dismantling, packing and shipping of a private Beechjet. The import of private aircraft is also one of our regular activities.

One of the world's largest manufacturers of air freight ULDs and pallets has a factory in Thailand. We handle all the export procedures for this client, be they delivery to Suvarnabhumi air port or export by container sea freight.



Defense & Security

Installing radar systems on top of mountains, including Doi Intanon requires very careful route planning to move the radar systems from port to location due to the remote locations. The lifting of the delicate equipment up and on to the radar pedestals is also complex. We have assisted the installation of radars, on mountains, hills and even at a beachside location.

As internal security becomes more important for the Thai Government, security X-Ray systems have been installed by us at railway stations, airports and jails. The suppliers check the X-Ray systems in our warehouse and then we deliver to the required location and assist with the installation.



International Factory Relocation

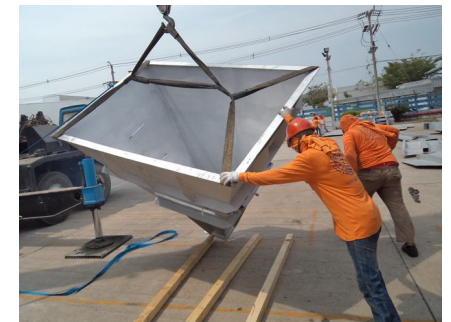
We have an enviable reputation for removing or installing heavy production equipment such as metal presses and die cast machines. Consequently, we have been awarded many turnkey international factory relocation projects.

These include three production lines for electric motors from Sydney to Nontaburi, a complete factory manufacturing heat exchanges for the automotive industry from Brisbane to Rayong, plastic extrusion lines from Holland, Japan and The Philippines to Chonburi and a complete power plant from Elsdorf, Germany to Uttaradit.



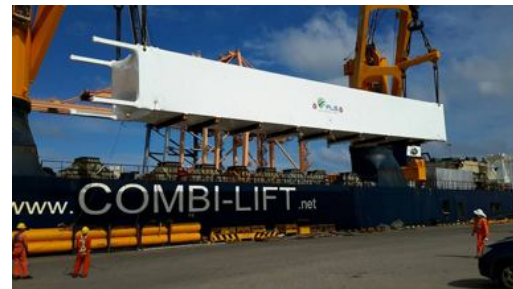
Power Plants

We have the “know how” for packing and shipping complete large power plant equipment. Projects have included gas turbine plant packed for shipment to Myanmar and Fiji and the transshipment of equipment for a large hydropower plant in Laos.



Petrochemicals

Thailand has a large fabrication industry for the petro-chemical sector due to the high standard of Thai workers, especially welders. Some of our projects have been shrink wrapping all on-deck cargo for 8 charter vessel shipments to USA and regular shipments of large compressor systems for the oil and gas industries around the world.



Electronics

Working in electronics production clean rooms requires the right equipment and packing teams who understand the requirements for working in a total dust-free environment. At V. Pack & Move (Bangkok) Co., Ltd., we have both the right equipment, particularly floor protection and skates, and teams that have been specially trained to work in these clean rooms for both the removal of out-dated machinery and replacement of the latest state-of-the-art production equipment.



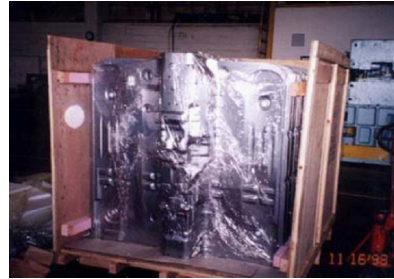
Medical

Medical equipment such as CT scanners, MRI and X-Ray equipment needs very careful handling and in many instances, the location within the hospital is not ideal for ease of access. We have assisted in the installation of such equipment in some very difficult locations, either below or above the hospital's floor level.



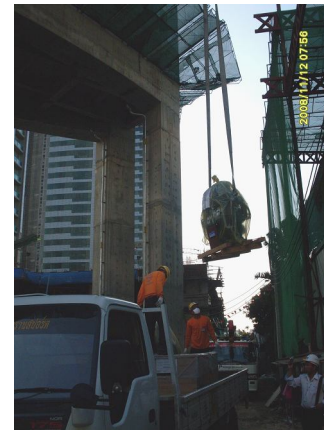
Automotive

As you all know, Thailand is a major automotive manufacturer and assembler. We work with a number of companies in this sector moving in new production equipment, relocating production plants and packing for shipment stamping dies, assembly rigs, body panels, seats and climate control systems.



Elevators & Escalators

The import, delivery to construction site and lifting into position for elevators and escalators needs specialized knowledge and experience. On many city locations, all the work has to be done late at night under police security due to traffic flow during normal working hours. We have the “know how” and the experience.



Office and Household Relocation

We have a worldwide network for the relocation of household goods and personal effects for families moving to or from Thailand. Within Thailand, we handle household relocations to every province.

Our clients include diplomats, corporate staff and returning Thai citizens. We also have a special service for Thai students returning from study in the UK.

Our experience in office relocation ranges from small offices to large government departments and some of the leading Thai corporations.



Food & Beverage

With the expansion on Inter-Asean business cooperation, international restaurant brands are opening outlets in Cambodia, Laos and Myanmar under Thai master franchise holders. We are now doing regular packing of all equipment, furniture and signage for a number of brands for shipments to Cambodia, Laos and Myanmar as the business expands in those countries.

We also work in the Thai food and beverage industry, assisting in the unloading and positioning of food and beverage production equipment.



Hotels & Resorts

The Thai hospitality industry continues to grow, both locally and on an international scale. We have one client who continues to open new resorts in exotic locations and up-grade existing facilities at existing resorts. All the furniture and décor items are delivered to our warehouse where they are sorted, packed, loaded into containers and sent by sea freight to the resort locations.

Here in Thailand, other hotels go through regular renovation to up-grade their properties. In this type of situation, we remove all room furniture and fitting on a floor by floor basis so that the renovations can be completed. Once a number of floors are renovated, we then return all the furniture and fitting to each room on those floors and then bring the same type of items from the next floors to be renovated and store in our warehouse until required.



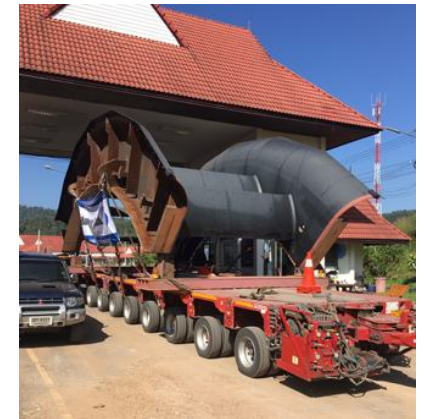
Furniture & Handicrafts

Thailand has a large industry exporting furniture and handicrafts. We have a number of clients who provide us with a list of their suppliers and orders. We then collect and pack in our warehouse ready for shipment overseas. Through close communication, we advise these clients when we have a full container load ready for shipment.



Transit Shipments

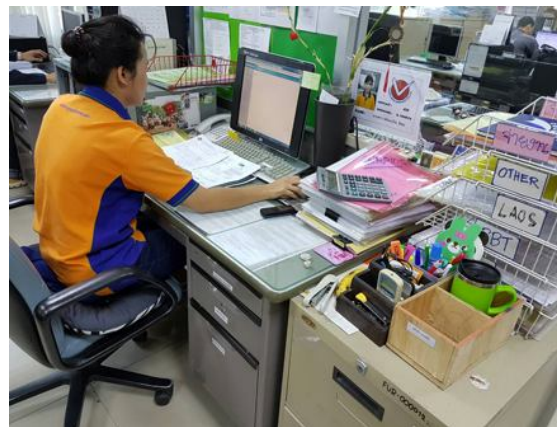
Laos, being a land-locked country, offers many opportunities for transshipment of commodities and equipment through Thailand. V. Pack & Move (Bangkok) Co., Ltd. has both road transport authority license for transshipments and Thai customs license for transshipment. Consequently, we do daily transshipments of mineral from Laos to Sattahip Port for export and many major shipment of equipment for the expanding industrial base in Laos. We have completed shipment of all the equipment for a new cement plant, major shipment of equipment for a hydro-power plant and regular smaller shipment for other clients.



Customs

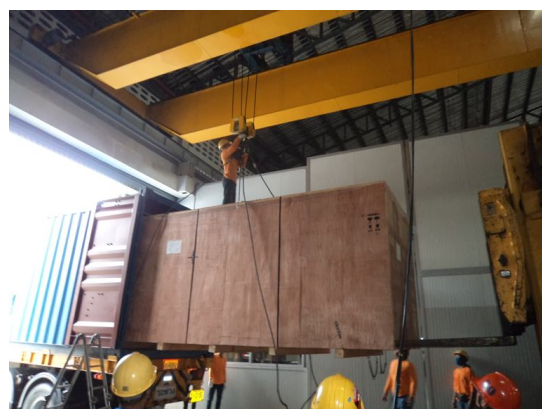
Thai customs has granted us the highest standard of customs brokerage license, Authorized Economic Organization (AEO), which is recognized by the World Trade Organization as the highest standard available.

Our Shipping Department is on-line through the EDI system for fast and efficient customs declaration and clearance. Apart from our head office and our office at Laemchabang, we can handles imports and exports of air freight, sea freight and overland shipments to Cambodia, Malaysia and Myanmar.



Industrial Packing

Our range of packing and moving services covers all types of industrial equipment beyond those sectors on previous pages. We work on projects for small machinery that is delivered to our warehouse for packing and major projects packed on clients' sites. This also includes loading and lashing containers and arranging sea or air freight.



Warehousing

Our main warehouse covers an area of 3,000 square meters and is used for both long term storage and for packing cargo delivered to the warehouse. An important feature is that we have multi-level, lock up modules that are each the size of a 20ft container.

The movement of cargo in the warehouse is facilitated by our forklifts and pallet trucks.

Warehouse operations are run on a very smooth and accountable system using barcode and all in and out cargo must have a signed delivery order.

The security of our warehouse is covered by both security guards 24 hours and a network of security cameras backed by a DVR system for instant monitoring.



Transport

We have a fleet of vehicles consisting of pickup trucks, jumbo pickups, 6-wheel van with tailgate lifter, 6 wheel trucks and 10wheel trucks with 5-ton capacity cranes. Many of these vehicles have Road Transport Passports for shipments to Laos.





Thank You

V. PACK & MOVE (BANGKOK) CO., LTD

90/1 Moo 4, Bangchalong, Bangplee, Samutprakarn 10540 Thailand

Tel: 02 7509555 (Auto 40 lines) Fax:027509556-7 Web: <http://www.vpackmove.com>

Email: info@vpackmove.com